



TSUNAMI PRECISION MOLD LTD.



宣大企業有限公司

<https://www.tsunami-p.com.tw/>

About us



TSUNAMI PRECISION MOLD

established in 2003 and located in Yanchao, Kaohsiung, specializes in molds for screws, bolts, nuts, sockets, bicycle, motorcycle and automotive parts.

We also provide customers with mold design and manufacturing services. With over 30 years of experience in mold production, we are supported by a team of well-trained employees.



CNC Lathe



EDM



Milling M/C



Lapping M/C

High Speed Lathe, CNC Grinding M/C, Hydraulic Press and...

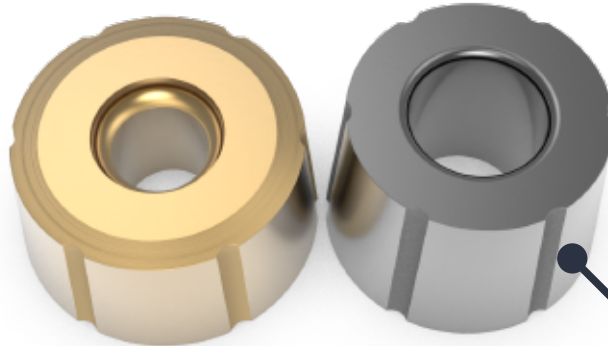
Tungsten Carbide Mold

From 8B to 45B

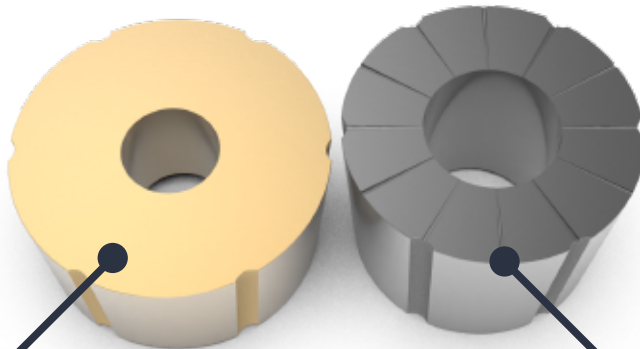


For Nuts, Screws, Bolts and Parts

When required conditions arise, the **CVD** high-temperature titanium coating reduces the friction coefficient and enhances wear resistance, extending the mold's lifespan and improving forming conditions.



More than 30 materials are available, with hardness ranging from HRA 81.5 to 93.

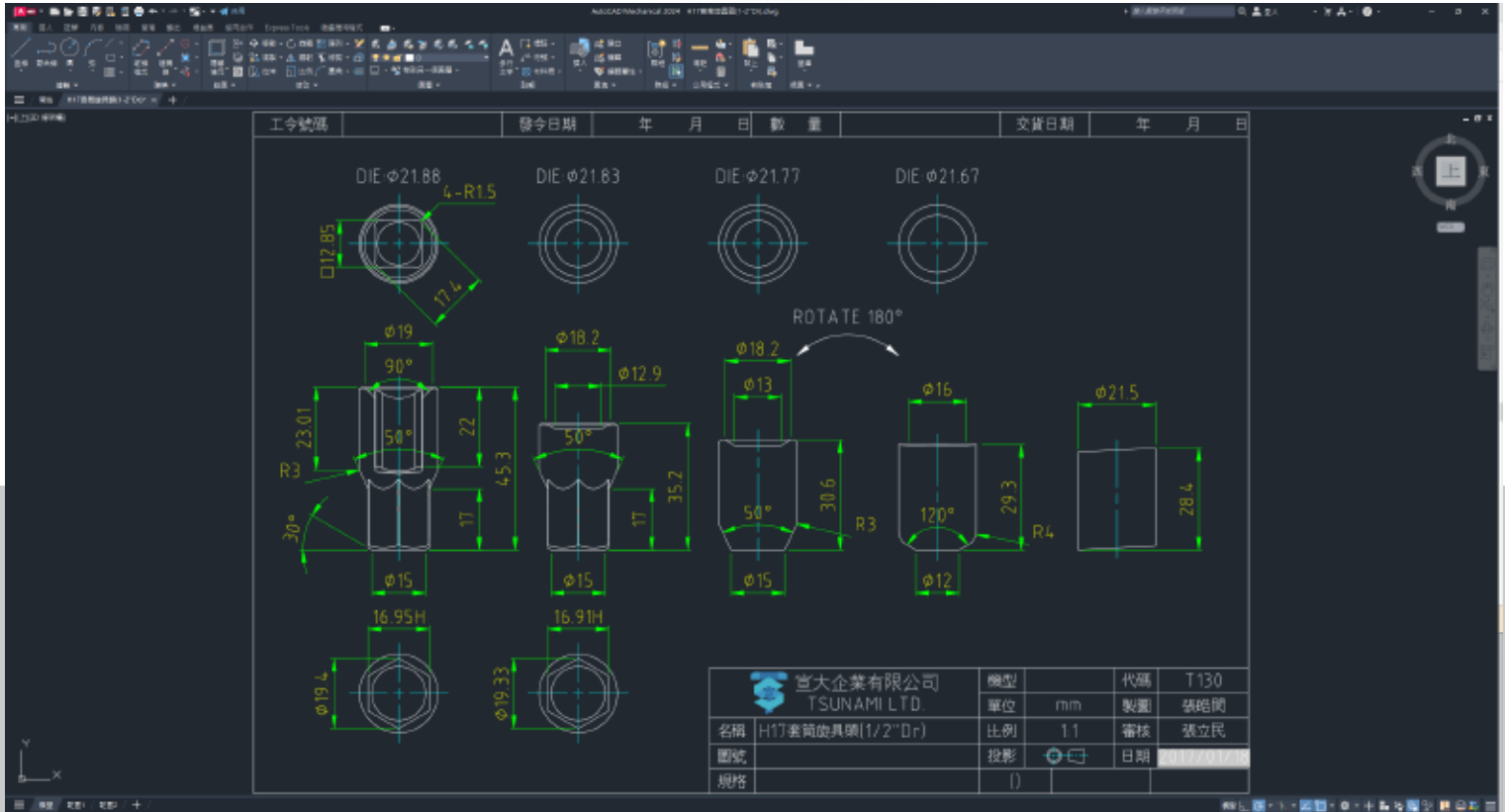


The optimized design of vent holes prevents air and oil from being trapped, extending the mold's lifespan.

Tungsten Carbide Mold



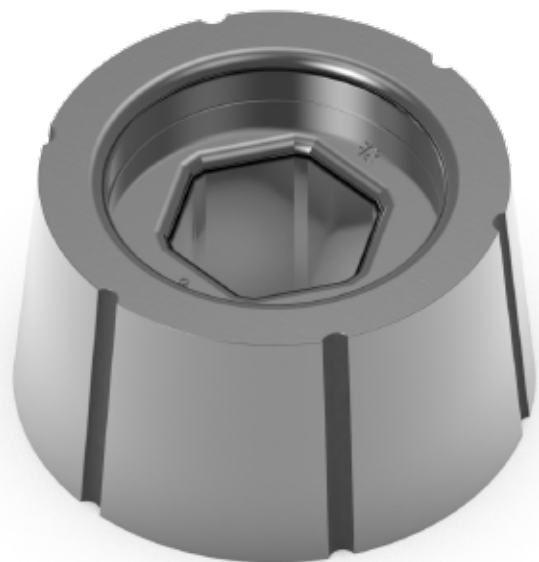
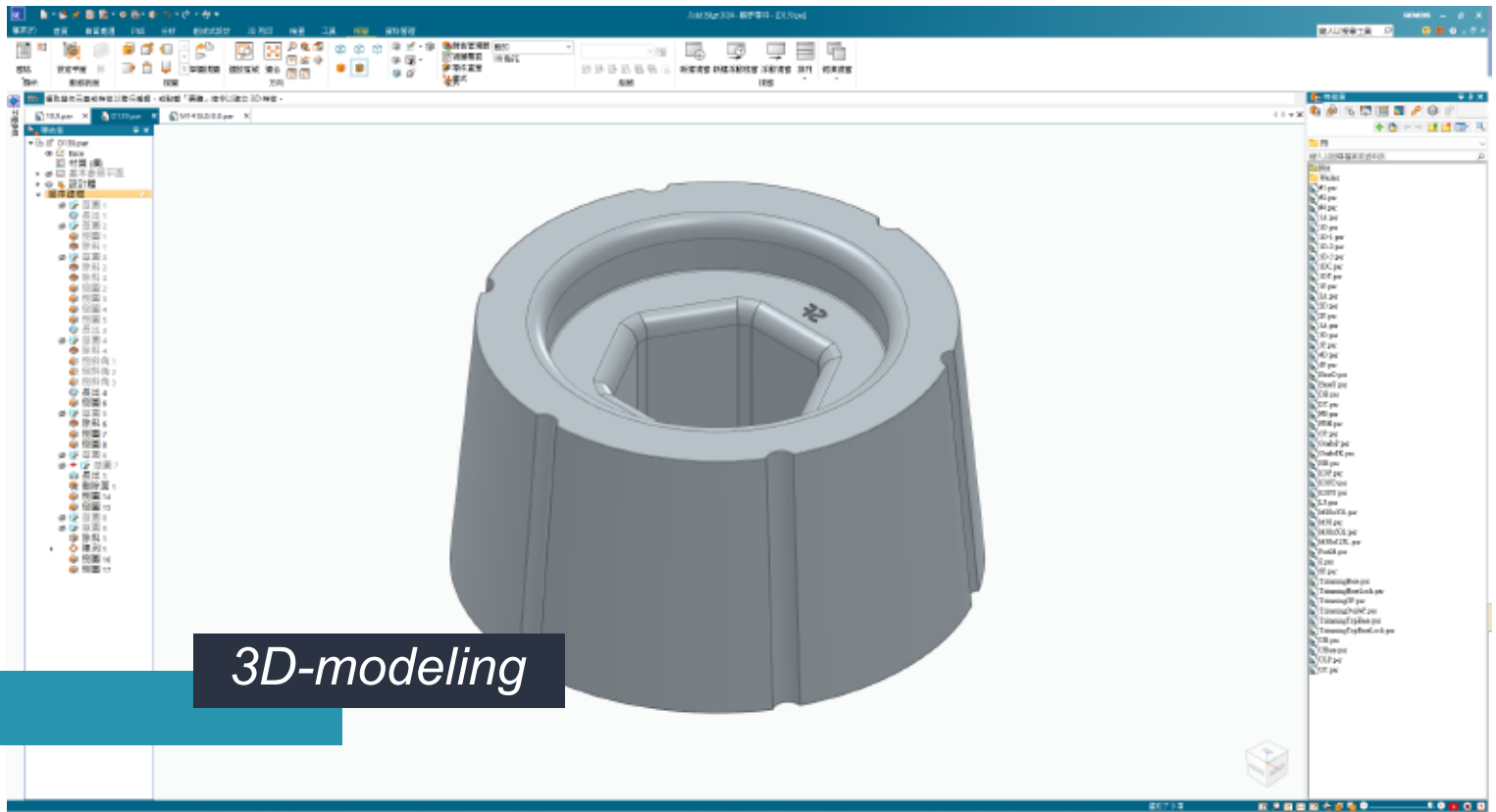
Your Product



Design & Manufacture



Tungsten Carbide Mold



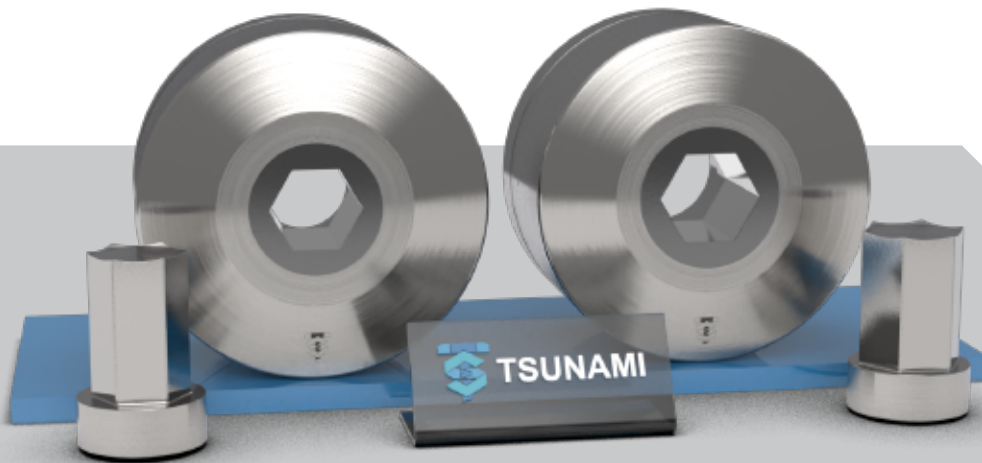
Electrodes & Polishing

Tungsten Carbide Mold

Weld Nut



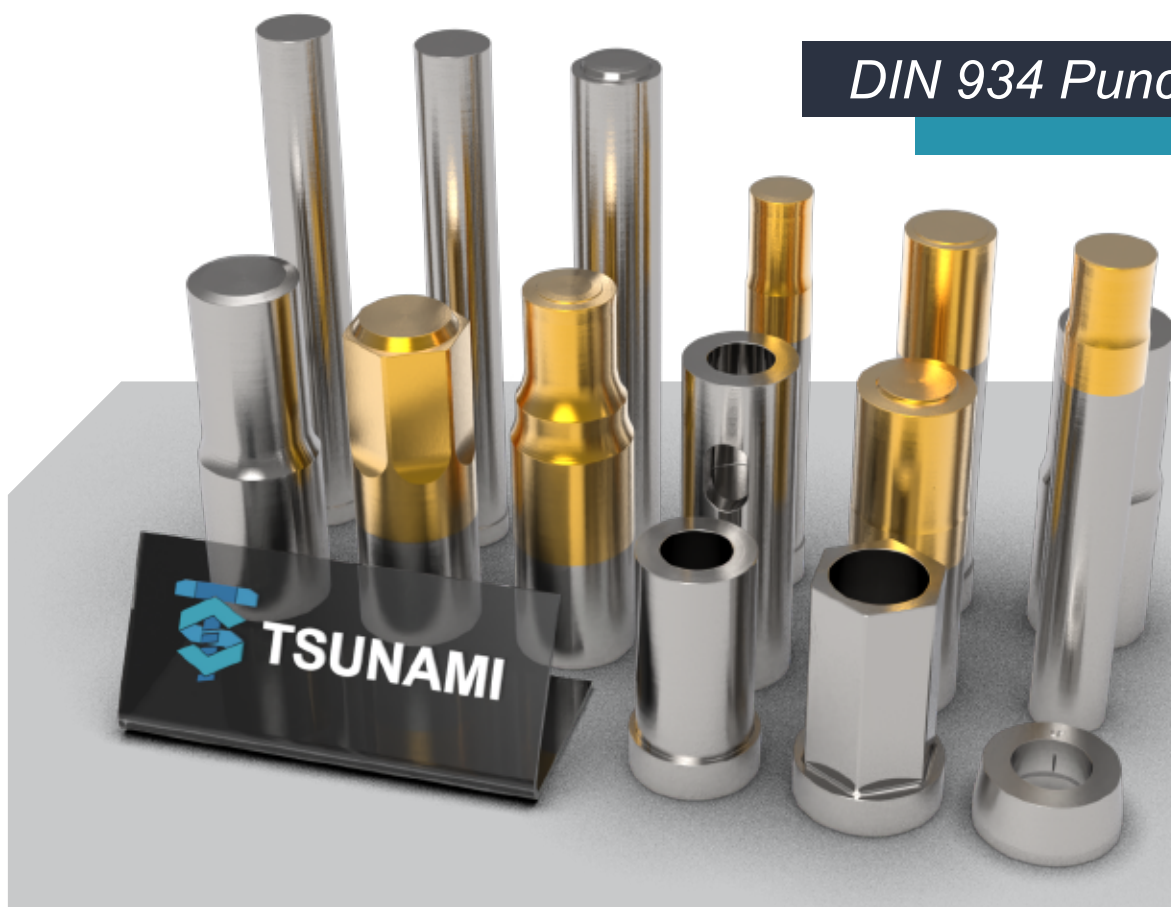
Hot Forging Mold



Cutter



Punch / K.O. Pin



DIN 934 Punch



*Round Punch
Hexgon Punch
Torx Punch
Second Punch*

Punch / K.O. Pin

PVD Tin Coated

PVD AlTiN Coated



*Irregular Punch
Customized Punch*

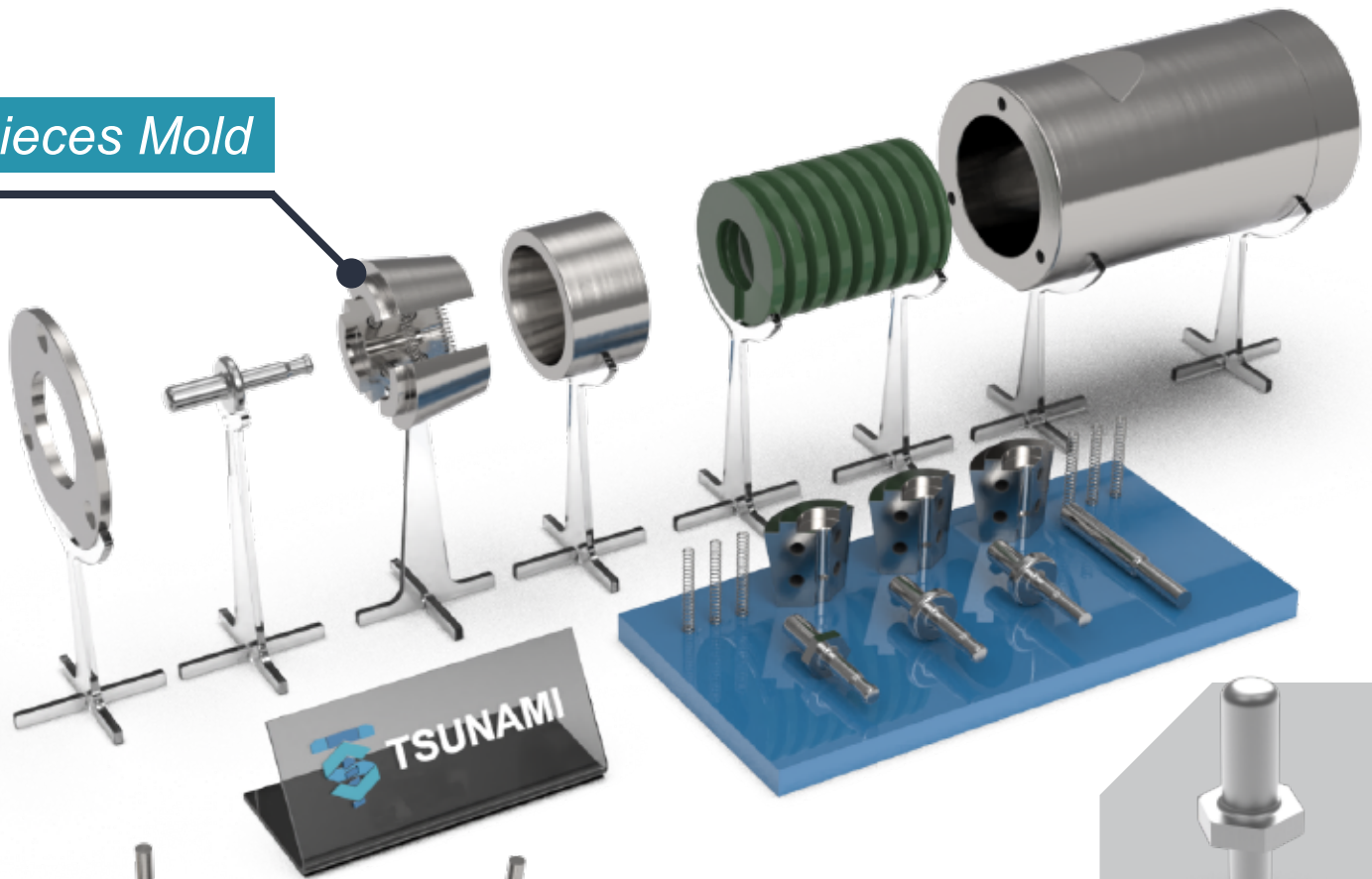
Tungsten Carbide Tip

Tungsten Carbide Punch



Other Mold

3-pieces Mold



Office Chair Wheel



Usage:

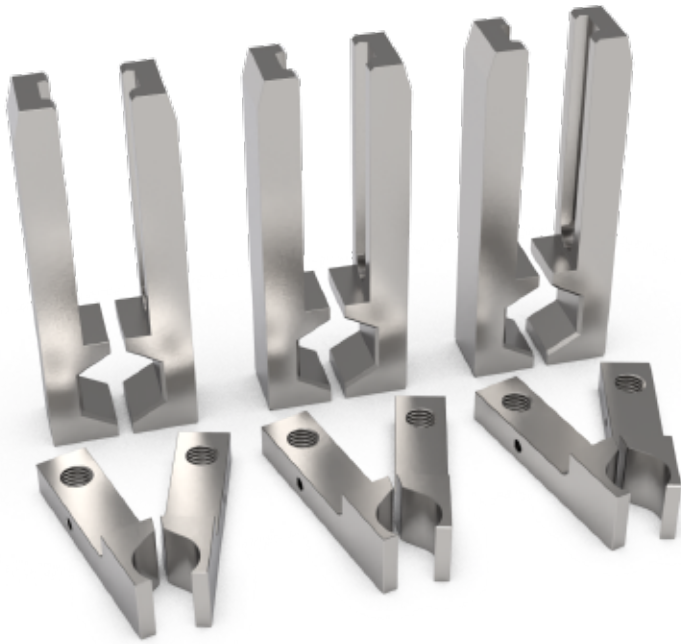
Molds required for products with both sides larger than the body.

This ensures fuller product corners and makes the mold more resistant to damage.



Segment Die

Other Tools



Transfer Finger

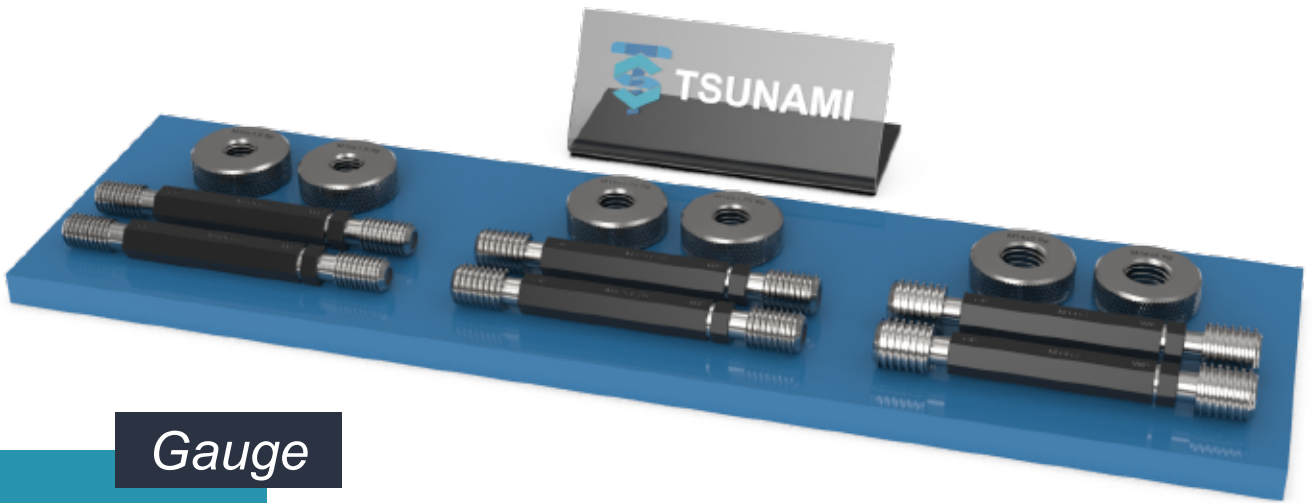


Feeding Roll

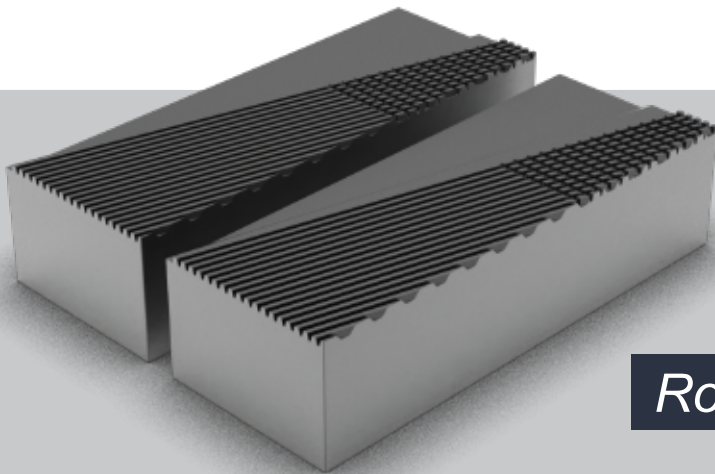


Trimming Die

Other Tools



Gauge



Rolling Die



CNC Parts



TSUNAMI PRECISION MOLD LTD.

TSUNAMI

*No. 2-6, Zhongzhu Rd., Yanchao Dist.,
Kaohsiung City 824, Taiwan, R.O.C.*

TEL:+886-7-6140505

FAX:+886-7-6140091

Email:tsunami.p.mold@gmail.com

cyndi@tsunami-p.com.tw

raj.menon@tsunami-p.com.tw

<https://www.tsunami-p.com.tw/>